

ACCESSING THE VESL MAINE DMR HARVESTER APPLICATION (iOS and ANDROID)

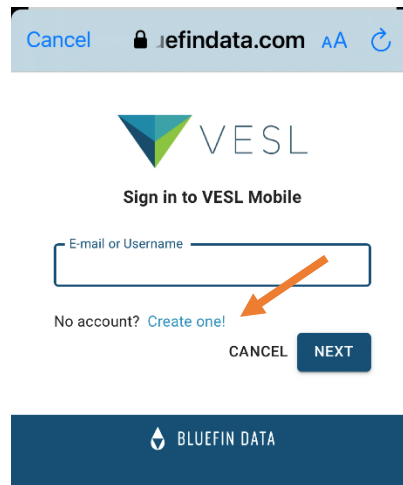
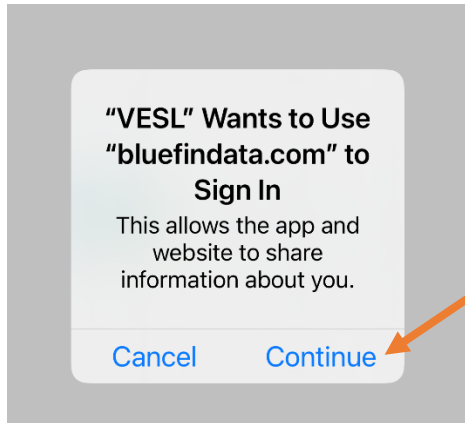
1. Download the VESL App. From the Apple App Store or Google Play Store, search for VESL (Bluefin Data LLC) and download/install the App.

[VESL - Apps on Google Play](#)

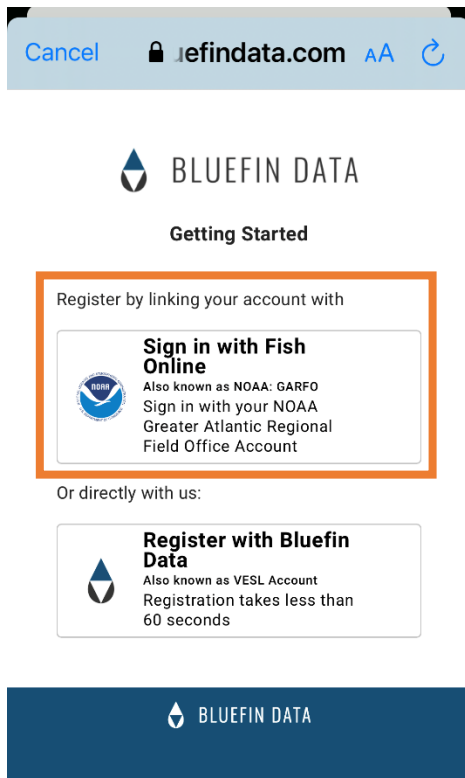
[VESL on the App Store \(apple.com\)](#)



2. Click on the VESL icon on your phone once it has downloaded. You will be asked to Sign In. Click "Continue". Click "Create one!" to set up your account.



3. Click on the button to "Sign in with Fish Online". You will be brought to the NOAA Fisheries Website.



4. Scroll to the bottom of the screen. If you already have a Fish Online Account, enter your Username and Password and click “Authorize Application”. Skip to step 10 below to finish creating your VESL account. If you do not already have a Fish Online, click “Create Account” and follow steps 5-9.

If you already have a Fish Online account, enter your Username and Password then click “Authorize Application”.

If you do not have a Fish Online account, click “Create Account”.

5. Once you click “Create Account”, you will be brought to NOAA Fisheries Account Creation page. Scroll down and fill out all applicable information. If you need assistance with setting up a Fish Online account, call the NOAA help desk at (978) 281-9188 or contact your local Port Agent:
https://www.greateratlantic.fisheries.noaa.gov/apps/login/create_account



GARFO Applications

Account Creation

Welcome to GARFO's Fish Online account creation website. Fish online accounts are needed to access the Fish Online website and to use GARFO's electronic vessel trip reporting (eVTR) applications.

If you already have a user account, you may request your username and/or a new password using the 'Request your username' and/or 'Request a new password' features on the Fish Online homepage.

If you are a Vessel Owner wanting to use eVTR, please create your account then call our Industry Support Desk at (978) 281-9188 from the telephone associated with your Vessel Permit to activate your account.

If you are a Vessel Operator Permit holder wanting to use eVTR, please create your account then call our Industry Support Desk at (978) 281-9188 from the telephone associated with your Operator Permit to activate your account.

Please note: a continuous internet connection and immediate access to your email account is required in order to create a Fish Online account.

[Request a new password](#) [Request your username](#)

This is a U. S. Federal Government system. Unauthorized use of this system is a violation of federal law and may subject you to civil and criminal penalties. All access or use of this system constitutes unconditional consent to review, monitoring, and action by all authorized government and law enforcement personnel. While using this system your use may be monitored, recorded and subject to audit.

Unauthorized user attempts or acts to (1) access, upload, change, or delete or deface information on this system, (2) modify this system, (3) deny access to this system, (4) accrue resources for unauthorized use or (5) otherwise misuse this system are strictly prohibited. Such attempts or acts are subject to action that may result in criminal, civil, or administrative penalties.

6. Once you scroll down on the NOAA Fisheries Account Creation page, you'll need to enter your name, address, contact information and select a password. You need to fill out **ALL** fields. If you want to see your password as you are typing it, click "Show Passwords". Once you've completed each box, click "Save".



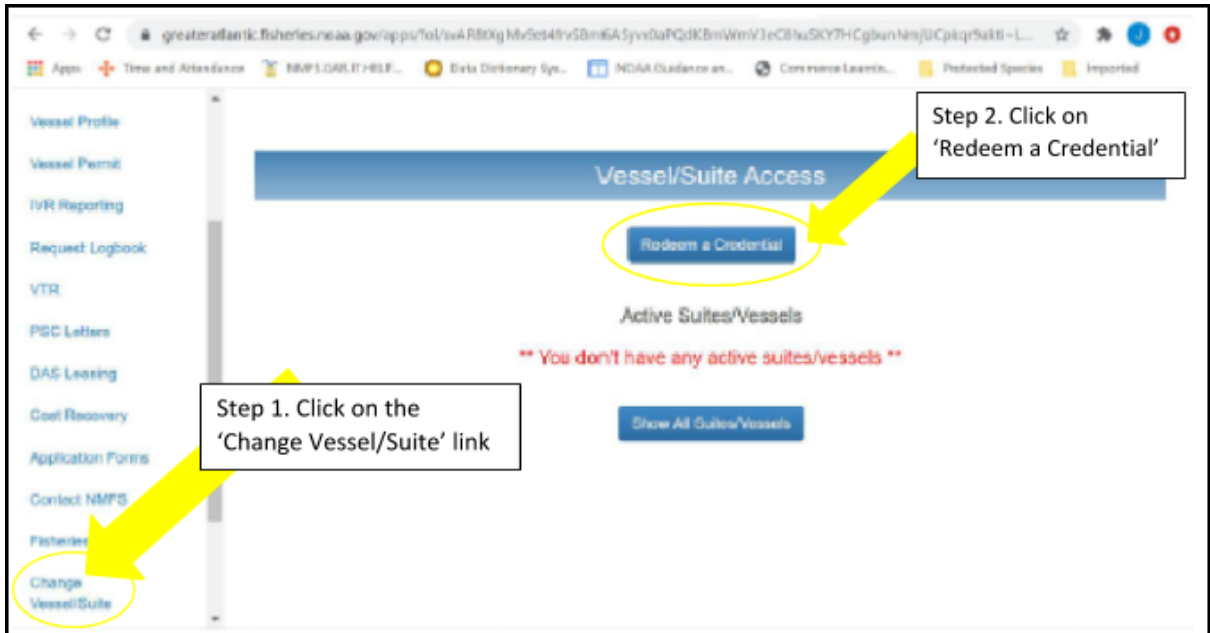
The screenshot shows the NOAA Fisheries account creation form. It is divided into two main sections. The left section contains fields for: Prefix (dropdown), Last Name, First Name, Middle Name, Suffix (dropdown), and Professional Suffix (dropdown). Below these is a security notice: "To ensure your security, your password must include each of the following types of characters:" followed by a bulleted list: UPPERCASE LETTERS, lowercase letters, Numbers: 0123456789, and Special Characters: ~!@#%&*()_ - + = { } [\ | ; : < > , . ? / . Below the list is a note: "Your password must be between 8 and 12 characters long." and fields for Password and Retype Password, with a "Show Passwords" button. The right section contains: Address Line 1, City, State (dropdown), Zip Code, Email Address, Telephone Number, Phone Type (dropdown), and Extension. A blue "Save" button is located below the right section, with an orange arrow pointing to it.

7. Once you click "Save", a pop-up notification will appear that asks you to enter a verification code. This code will be emailed to you at the email address you just entered in Step 6. Enter the verification code into the box and click "OK". A notification with your Username will then appear on the screen. Write it down.

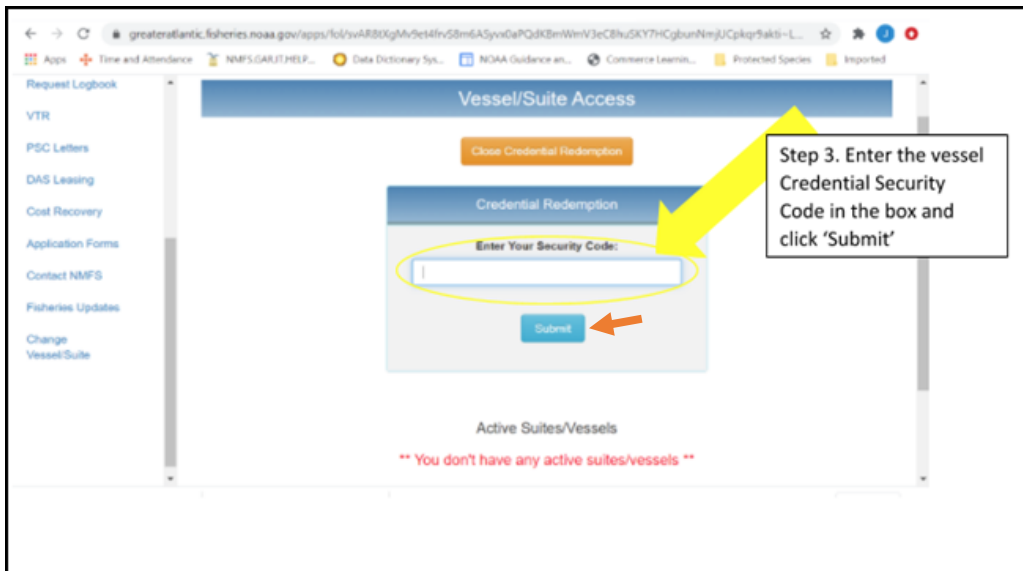
The screenshot shows a pop-up window titled "Email Verification". The text inside reads: "A verification code has been sent to your email. Please enter it in the field below and press OK to have your account activated." Below the text is a text input field with an orange arrow pointing to it. At the bottom of the window are two buttons: "OK" (highlighted with an orange box and an orange arrow) and "Cancel".

8. You will then need to return to the Fish Online Login Page and enter the Username and Password that you just created to log in: <https://www.greateratlantic.fisheries.noaa.gov/apps/login/login>

9. Next, you need to link a Vessel or your Operator Permit to your Fish Online account. Log in to your Fish Online account and do the following:
- A. Click on the “Change Vessel/Suite” link at the bottom of the menu on the left side of the page.
 - B. When the “Vessel/Suite Access” box appears on the screen, click the “Redeem a Credential” button.

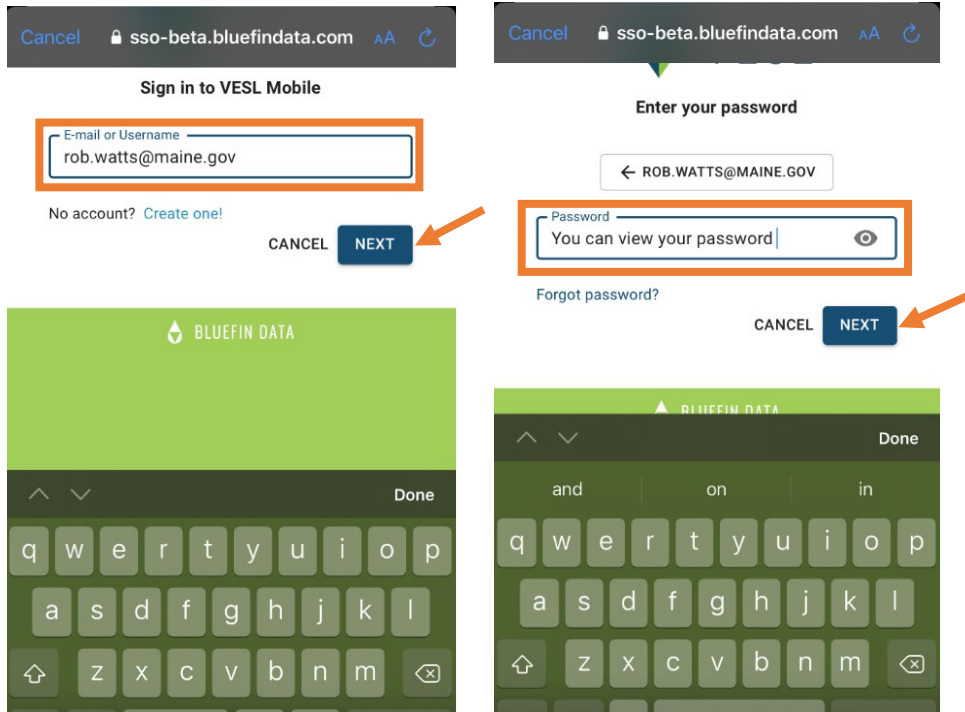


- C. In the box labelled “Enter Your Security Code”, enter the CSC included on the back of your Permit Renewal letter, then click the “Submit” button. If you cannot find the CSC code, call the NOAA help desk at (978) 281-9188 or contact your local Port Agent.

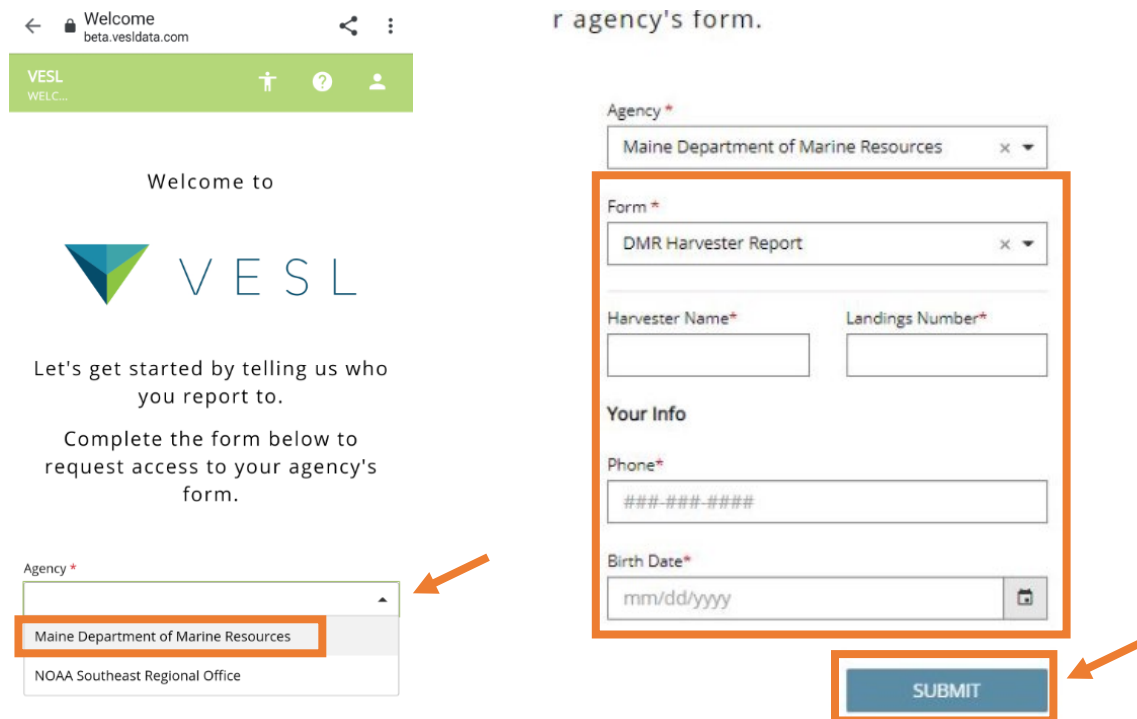


- D. Repeat Steps A-C for each vessel that you want to link to your Fish Online account.
- E. As an alternative to using the CSC to link your vessel or operator permit to your Fish Online account, you can call NOAA’s help desk at (978)-281-9188 or contact your local Port Agent.

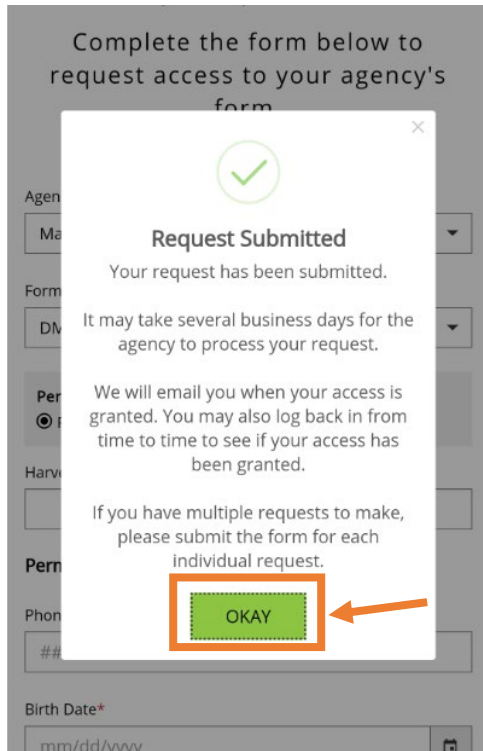
10. Click on the VESL App icon on your phone and log in with your Fish Online credentials. Enter your Fish Online Username and click "NEXT", then enter your Fish Online Password and click "NEXT".



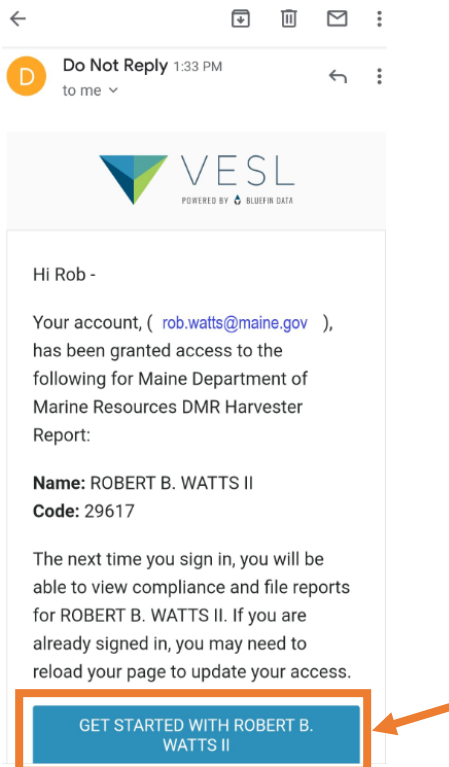
11. Next, you will need to select the Maine DMR reporting form. Click the drop-down arrow and select "Maine Department of Marine Resources". After selecting Maine DMR, make sure the "Form" selected is 'DMR Harvester Report' and then fill out your personal information (Name, Maine Landings #, Phone #, DOB). Click "SUBMIT" when you are done.



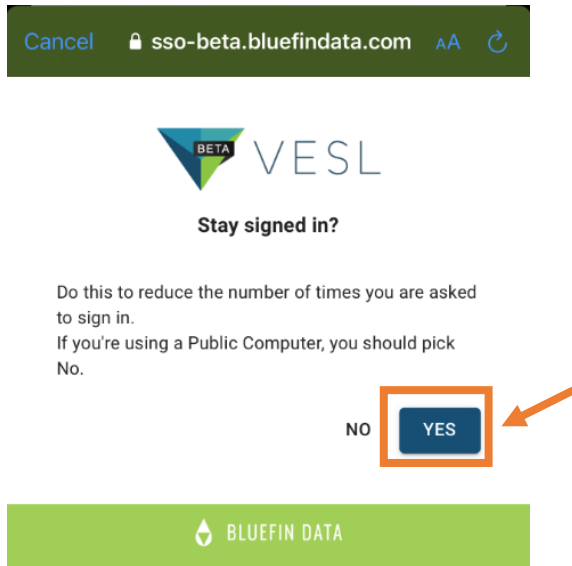
12. You will receive a screen saying your request was submitted. Click "OKAY" so DMR Landings Program staff can verify your VESL account.



13. Once your account is verified, you will receive an email from Bluefin Data LLC indicating that your access to the VESL harvester reporting program has been granted. If you click "GET STARTED WITH (NAME)", it will take you to the VESL harvester reporting program.



14. When logging-in for the first time, you'll receive the following screen. Click "YES" to 'Stay Signed In' so you **will not** have to log-in each time you use the program. Click "NO," if you want to log-in each time you use the program. Once logged in, you can view your compliance status and file negative reports. To submit positive reports, you'll need to close out of the internet screen and click on the VESL App icon on your phone.



15. The VESL help center has a section on their website to help with understanding the basics of VESL. You can follow this link for additional support: support.bluefindata.com