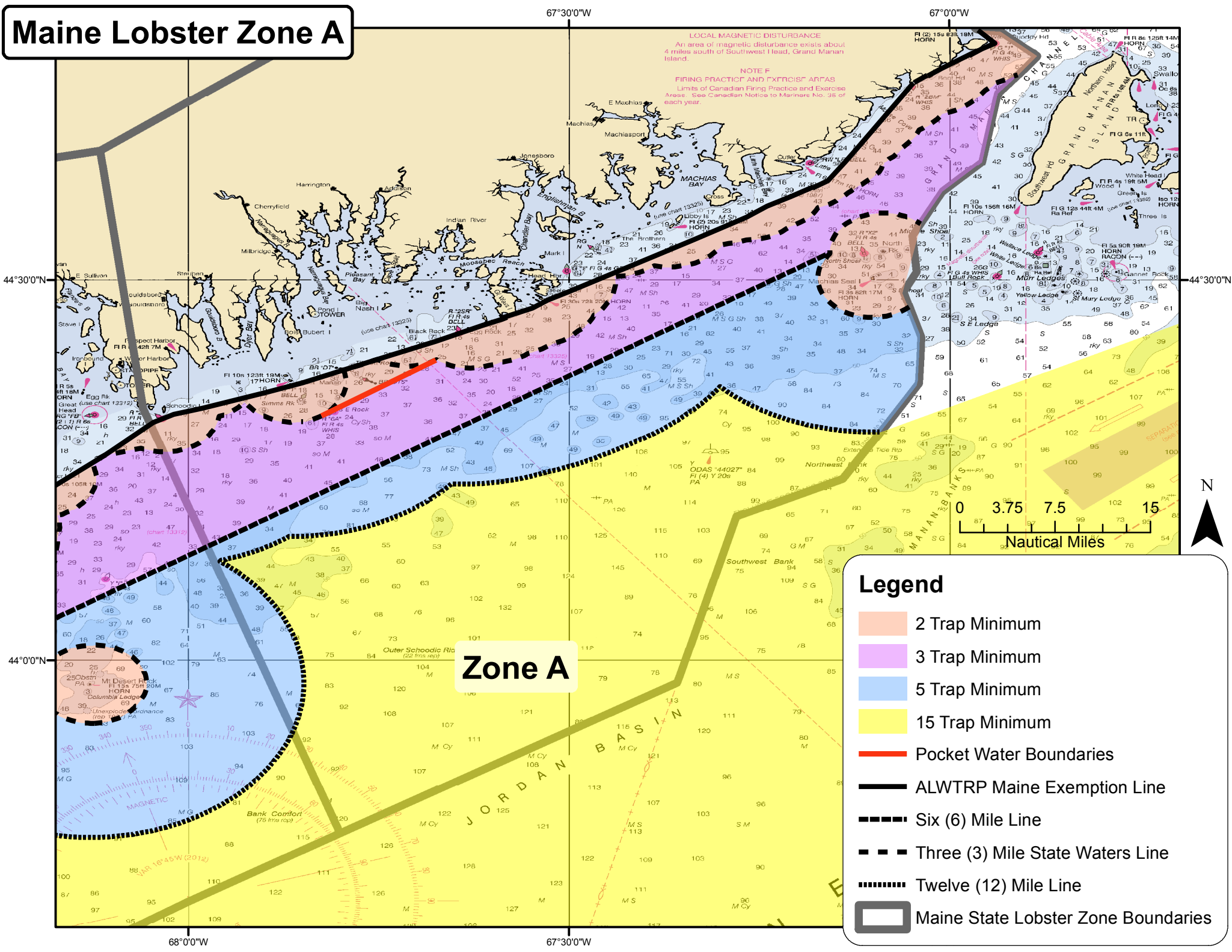


Maine Lobster Zone A



LOCAL MAGNETIC DISTURBANCE
An area of magnetic disturbance exists about 4 miles south of Southwest Head, Grand Manan Island.

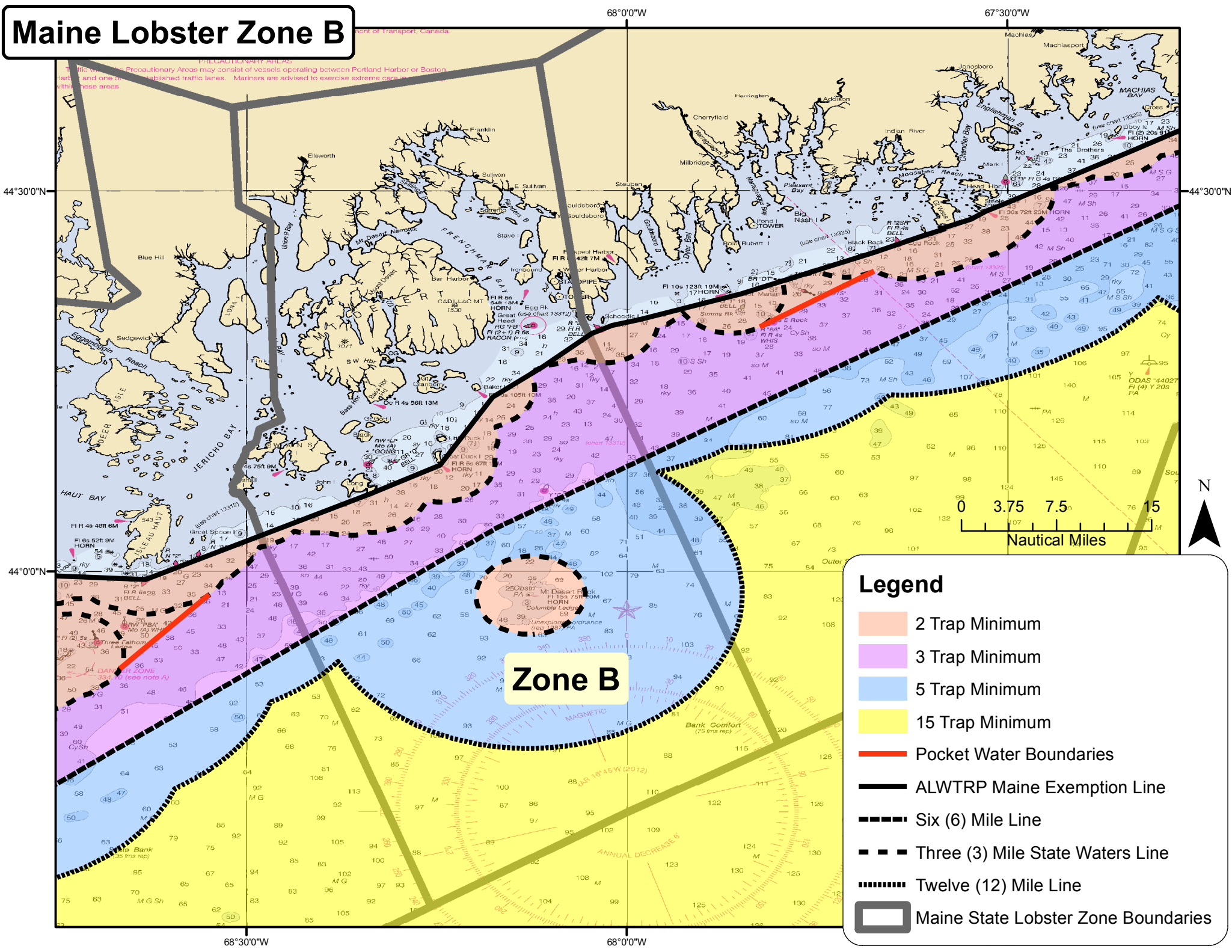
NOTE F
FIRING PRACTICE AND EXERCISE AREAS
Limits of Canadian Firing Practice and Exercise Areas. See Canadian Notices to Mariners No. 35 of each year.

Zone A

Legend

- 2 Trap Minimum
- 3 Trap Minimum
- 5 Trap Minimum
- 15 Trap Minimum
- Pocket Water Boundaries
- ALWTRP Maine Exemption Line
- Six (6) Mile Line
- Three (3) Mile State Waters Line
- Twelve (12) Mile Line
- Maine State Lobster Zone Boundaries

Maine Lobster Zone B



Zone B

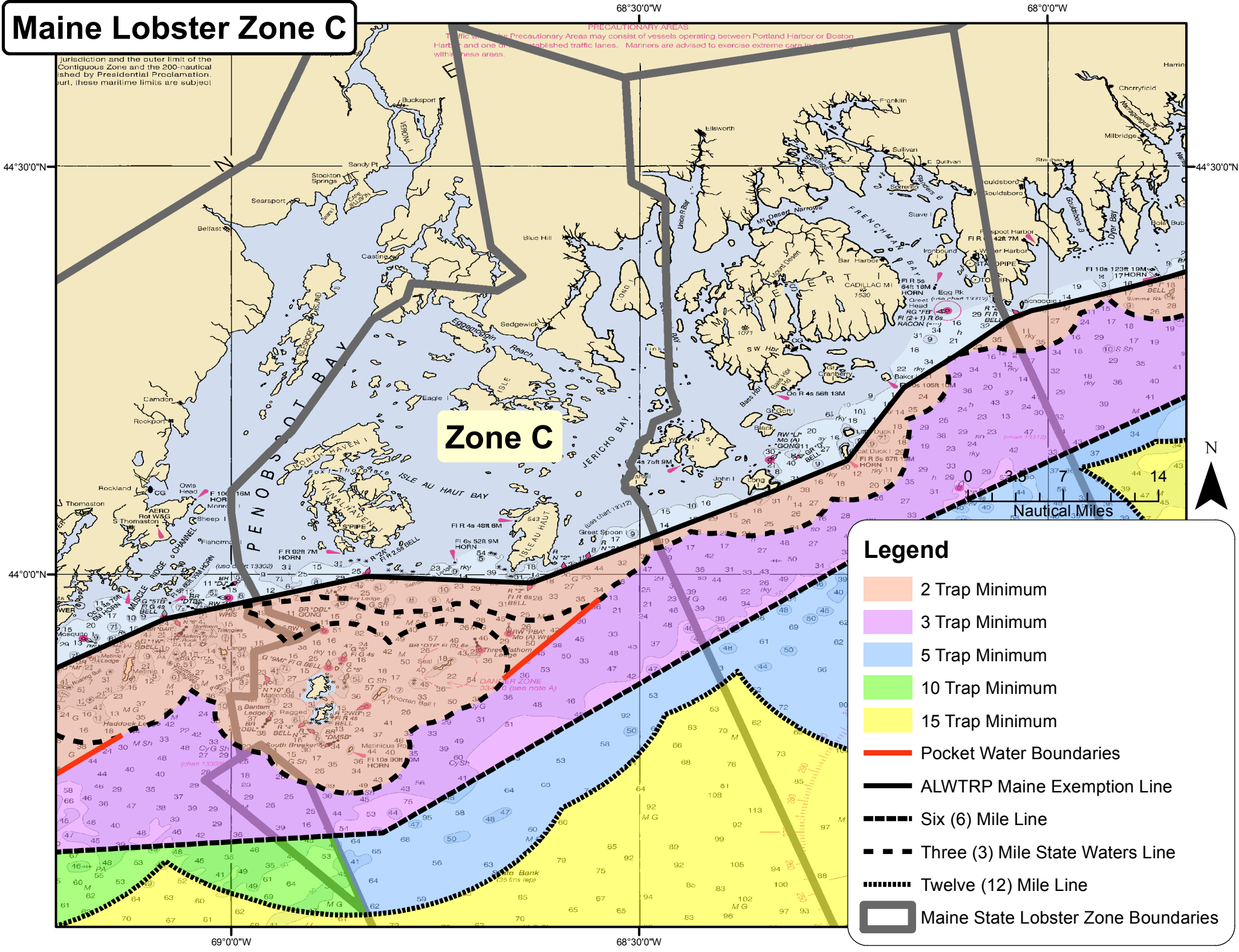
Legend

- 2 Trap Minimum
- 3 Trap Minimum
- 5 Trap Minimum
- 15 Trap Minimum
- Pocket Water Boundaries
- ALWTRP Maine Exemption Line
- Six (6) Mile Line
- Three (3) Mile State Waters Line
- Twelve (12) Mile Line
- Maine State Lobster Zone Boundaries

Maine Lobster Zone C

Jurisdiction and the outer limit of the Contiguous Zones and the 200-nautical mile limit, these maritime limits are subject to Presidential Proclamation.

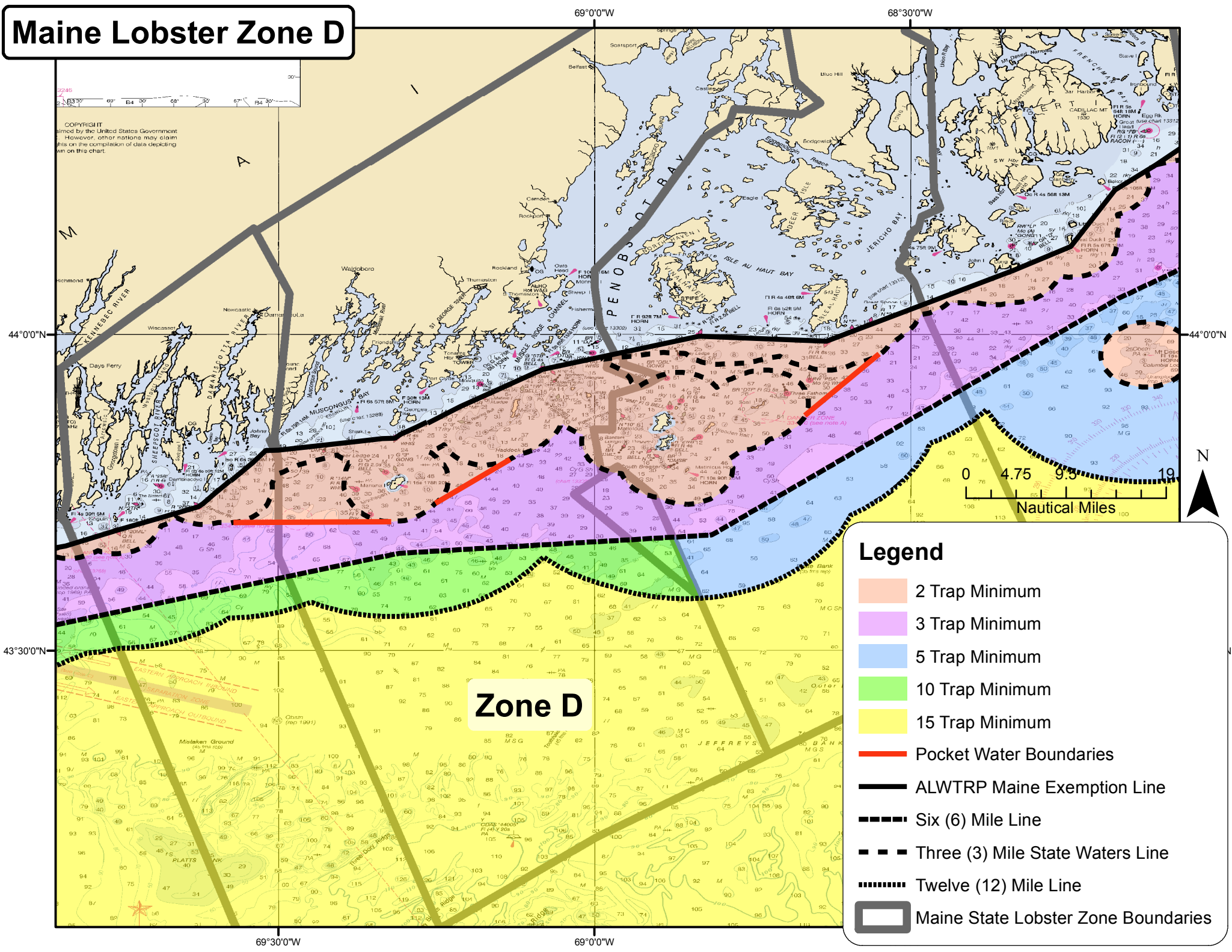
Zone C



Legend

- 2 Trap Minimum
- 3 Trap Minimum
- 5 Trap Minimum
- 10 Trap Minimum
- 15 Trap Minimum
- Pocket Water Boundaries
- ALWTRP Maine Exemption Line
- Six (6) Mile Line
- Three (3) Mile State Waters Line
- Twelve (12) Mile Line
- Maine State Lobster Zone Boundaries

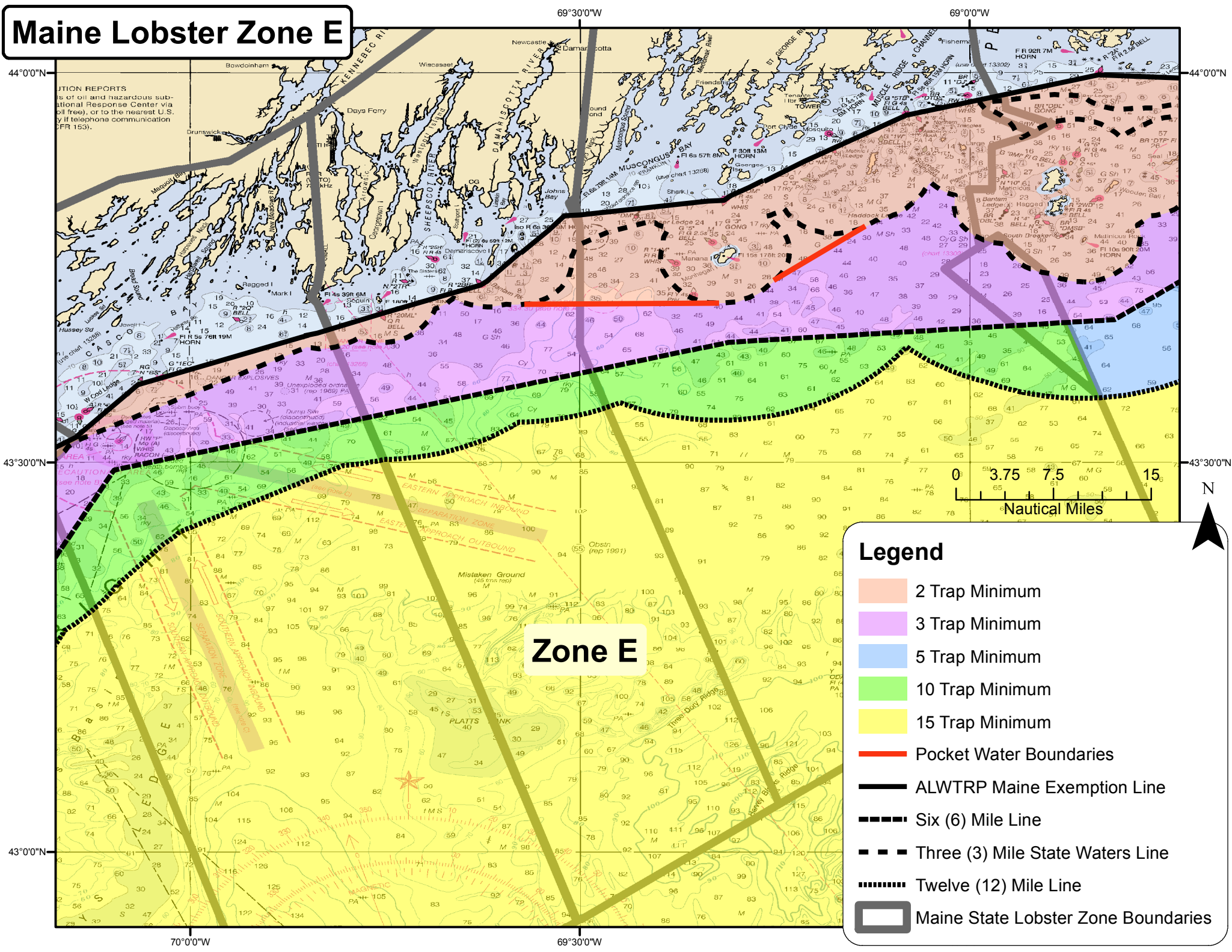
Maine Lobster Zone D



Legend

- 2 Trap Minimum
- 3 Trap Minimum
- 5 Trap Minimum
- 10 Trap Minimum
- 15 Trap Minimum
- Pocket Water Boundaries
- ALWTRP Maine Exemption Line
- Six (6) Mile Line
- Three (3) Mile State Waters Line
- Twelve (12) Mile Line
- Maine State Lobster Zone Boundaries

Maine Lobster Zone E



Zone E

Legend

- 2 Trap Minimum
- 3 Trap Minimum
- 5 Trap Minimum
- 10 Trap Minimum
- 15 Trap Minimum
- Pocket Water Boundaries
- ALWTRP Maine Exemption Line
- Six (6) Mile Line
- Three (3) Mile State Waters Line
- Twelve (12) Mile Line
- Maine State Lobster Zone Boundaries



UTION REPORTS
of oil and hazardous sub-
national Response Center via
oil free), or to the nearest U.S.
y if telephons communication
FR 153).

44°00'N

44°00'N

43°30'N

43°30'N

43°00'N

70°00'W

69°30'W

69°00'W

69°30'W

Maine Lobster Zone G

RECOMMENDED SEASONAL AREA TO BE AVOIDED
 This area has been established in order to reduce the risk of ship strikes of the endangered North Atlantic right whale. It is recommended that ships of 300 gross tonnage and upwards stay in transit during the period of 1 June through 31 December should avoid the area. (MSG I/MO SN.1/CIRC.263)

NOTE D
 Trawlers or other vessels should exercise caution while dragging the ocean floor within a 6.7 mile radius of Isles of Shoals Light since it is known that JATO racks and associated debris exist in the area.

Zone G

NOTE: Zones F & G
15 Trap Minimum Mar 1 - Oct 31
20 Trap Minimum Nov 1 - Feb 28/29

Legend

- 2 Trap Minimum
- 3 Trap Minimum
- 5 Trap Minimum
- 10 Trap Minimum
- 15 or 20 Trap Minimum
- Pocket Water Boundaries
- ALWTRP Maine Exemption Line
- Six (6) Mile Line
- Three (3) Mile State Waters Line
- Twelve (12) Mile Line
- Maine State Lobster Zone Boundaries

