



## BURGLARY

Burglary, also known as breaking and entering, is “the unlawful entry or attempted forcible entry of any structure to commit a felony or larceny.”

“A person is guilty of burglary if he enters or surreptitiously remains in a structure, knowing that he is not licensed or privileged to do so, with the intent to commit a crime therein.” M.R.S.A. Title 17-A, § 401

### Crime Clock

1 Burglary  
every  
83 minutes,  
5 seconds

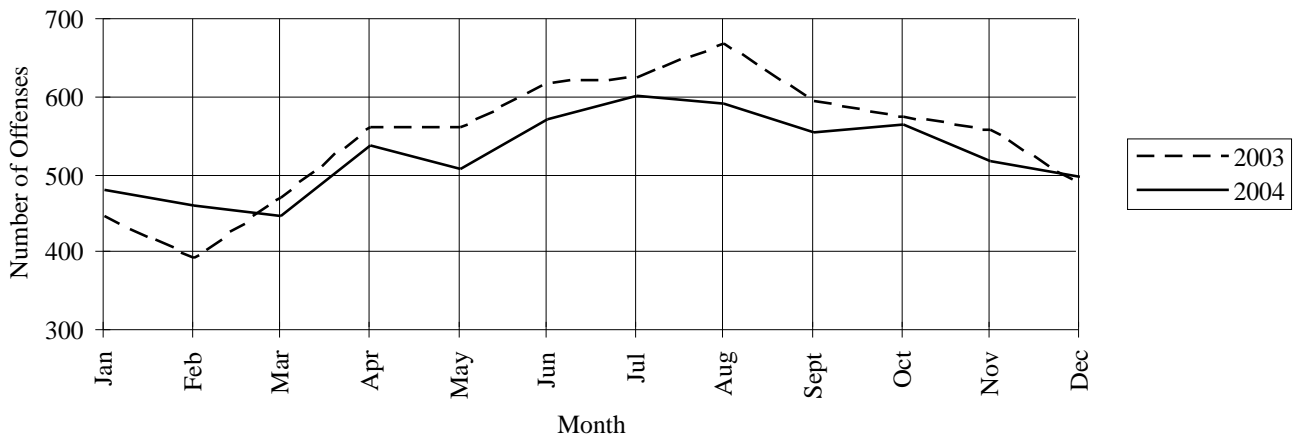
Year	Trend					2000–2004
	2000	2001	2002	2003	2004	
Number reported	6,759	6,878	6,944	6,571	6,344	
% change from previous year	-11.3%	1.8%	1.0%	-5.4%	-3.5%	% change -6.1%
Rate per 1,000	5.30	5.35	5.36	5.03	4.82	
% change from previous year	-14.1%	0.9%	0.2%	-6.2%	-4.2%	% change -9.1%

Characteristics — 2004	
<b>Place of Occurrence</b>	
Residence.....	66.9%
Non-Residence.....	33.1%
<b>Type of Entry</b>	
Forcible Entry.....	52.1%
Unlawful Entry — No Force.....	42.3%
Attempted Forcible Entry.....	5.6%
<b>Time of Day</b>	
Day — 6 a.m.–6 p.m.....	34.3%
Night — 6 p.m.–6 a.m.....	33.2%
Unknown.....	32.5%
<b>Months of Highest Occurrence</b>	
July .....	9.5%
August .....	9.4%
June .....	9.0%
<b>Value of Property Stolen during Offense</b>	
Total.....	\$5,432,520.00
Per Incident Average.....	\$856.32
<b>Clearance Rate</b>	
1,400 Offenses Cleared.....	22.1%
Arrests/Crime Ratio.....	0.20

Profile of Persons Arrested 1,273 Arrests	
<b>Age</b>	
17 and under.....	35.1%
18–24.....	40.1%
25–29.....	10.2%
30–34.....	5.7%
35–39.....	3.7%
40 and over.....	5.1%
<b>Sex</b>	
Male.....	87.1%
Female.....	12.9%

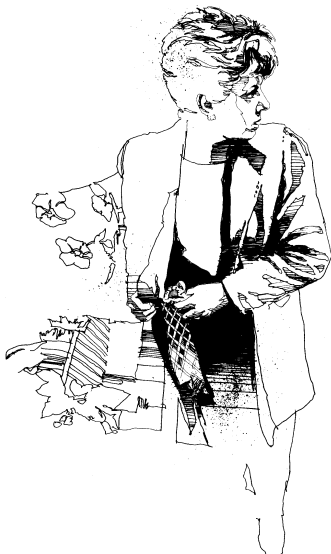
Type of Entry, 2003–2004			
	2003	2004	% change
Forcible Entry	3,477	3,303	-5.0%
Unlawful Entry, no force	2,719	2,685	-1.3%
Attempted Forcible Entry	375	356	-5.1%
<b>Totals</b>	<b>6,571</b>	<b>6,344</b>	<b>-3.5%</b>

**Burglaries — Comparative Data 2003–2004**



**Burglary by Time of Day, 2003–2004**

	Number of Offenses			Estimated Value of Property Loss		
	2003	2004	% change	2003	2004	% change
<b>Residence</b>						
6 p.m.–6 a.m.	1,136	1,185	4.3%	\$804,552	\$831,775	3.4%
6 a.m.–6 p.m.	1,877	1,660	-11.6%	\$1,810,680	\$1,628,670	-10.1%
Unknown	1,354	1,399	3.3%	\$1,186,910	\$1,258,767	6.1%
<b>Subtotals</b>	<b>4,367</b>	<b>4,244</b>	<b>-2.8%</b>	<b>\$3,802,142</b>	<b>\$3,719,212</b>	<b>-2.2%</b>
<b>Non-Residence</b>						
6 p.m.–6 a.m.	974	923	-5.2%	\$894,107	\$707,315	-20.9%
6 a.m.–6 p.m.	701	513	-26.8%	\$518,785	\$420,180	-19.0%
Unknown	529	664	25.5%	\$541,488	\$585,813	8.2%
<b>Subtotal</b>	<b>2,204</b>	<b>2,100</b>	<b>-4.7%</b>	<b>\$1,954,380</b>	<b>\$1,713,308</b>	<b>-12.3%</b>
<b>Grand Totals</b>	<b>6,571</b>	<b>6,344</b>	<b>-3.5%</b>	<b>\$5,756,522</b>	<b>\$5,432,520</b>	<b>-5.6%</b>



**LARCENY-THEFT**

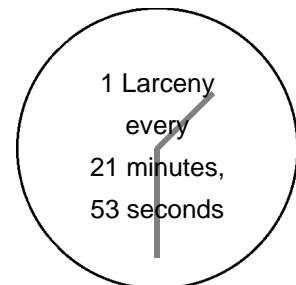
Larceny is the unlawful taking of the property of another with the intent to deprive him of ownership.

Maine has consolidated conduct denoted as Theft under Title 17-A, Chapter 15, § 351, Consolidation, embracing numerous separate crimes previously known as larceny, embezzlement, false pretenses, extortion, blackmail, shoplifting, and receiving stolen property. In properly classifying/scoring these offenses under UCR guidelines, certain offenses fall under Larceny-Theft, while others more appropriately fit under Part II offense definitions such as Fraud, Embezzlement, Stolen Property or All Other Offenses.

*Theft by unauthorized taking or transfer — “1. A person is guilty of theft if he obtains or exercises unauthorized control over the property of another with intent to deprive him thereof.” M.R.S.A. Title 17-A, § 353*

*Burglary of a motor vehicle — “A person is guilty of theft if the actor enters a motor vehicle knowing the actor is not licensed or privileged to do so, with the intent to commit a crime therein (and that crime is theft).” M.R.S.A. Title 17-A, § 405*

**Crime Clock**



<i>Trend</i>						
<b>Year</b>	<b>2000</b>	<b>2001</b>	<b>2002</b>	<b>2003</b>	<b>2004</b>	<b>2000-2004</b>
Number reported	23,808	24,515	24,496	24,064	24,087	
% change from previous year	-6.2%	3.0%	-0.1%	-1.8	0.1%	
						% change 1.2%
Rate per 1,000	18.67	19.05	18.92	18.43	18.29	
% change from previous year	-9.1%	2.0%	-0.7%	-2.6	-0.8%	
						% change -2.1%

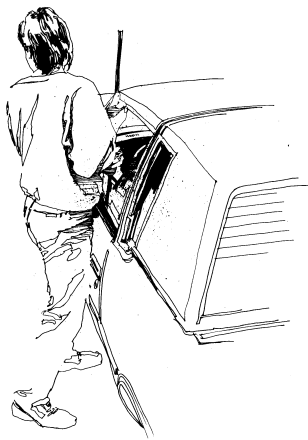
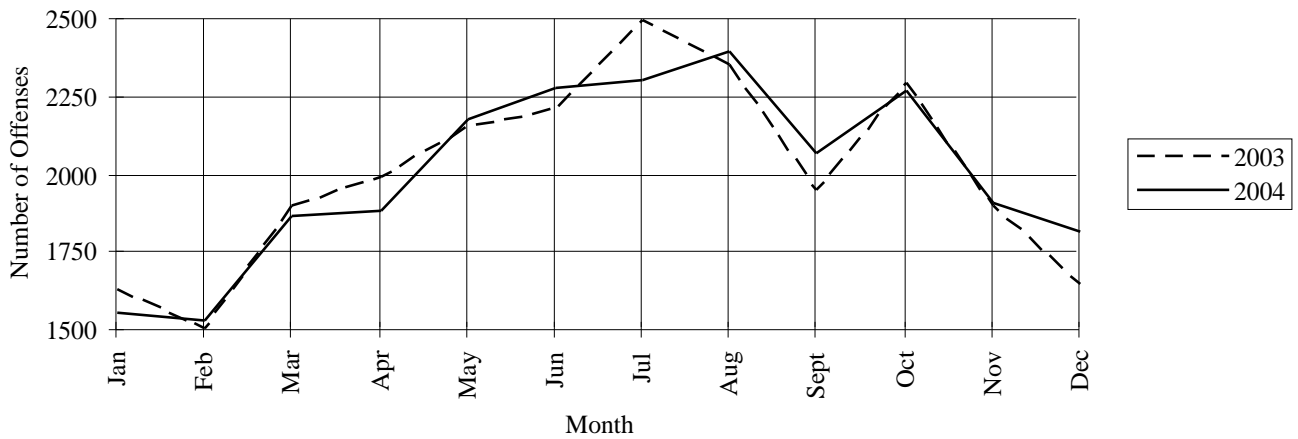
<i>Characteristics — 2004</i>	
<b>Type of Criminal Activity</b>	
All Other .....	41.1%
From Motor Vehicles .....	18.8%
From Buildings .....	15.9%
Shoplifting .....	13.8%
Bicycles .....	4.4%
Motor Vehicle Parts & Accessories .....	4.1%
Purse-Snatching .....	0.9%
From Coin-Op Machines .....	0.7%
Pocket-Picking .....	0.2%
<b>Value per Incident</b>	
Under \$50 .....	43.7%
Over \$200 .....	31.4%
\$50 to \$200 .....	24.9%
<b>Months of Highest Occurrence</b>	
August .....	10.0%
July .....	9.6%
June .....	9.5%
<b>Value of Property Stolen during Offense</b>	
Total.....	\$11,346,938.00
Per Incident Average.....	\$471.08
<b>Clearance Rate</b>	
6,642 Offenses Cleared.....	27.6%
Arrests/Crime Ratio.....	0.23

***Profile of Persons Arrested***  
***5,630 Arrests***

<b>Age</b>	
17 and under.....	32.6%
18-24.....	32.5%
25-29.....	9.8%
30-34.....	7.1%
35-39.....	6.0%
40 and over.....	12.1%
<b>Sex</b>	
Male.....	60.2%
Female.....	39.8%

<i>Larceny by Classification, 2003-2004</i>						
	<b>Number of Offenses</b>			<b>Value Stolen</b>		
	<b>2003</b>	<b>2004</b>	<b>% change</b>	<b>2003</b>	<b>2004</b>	<b>% change</b>
Pocket-Picking	83	52	-37.3%	\$23,057	\$10,234	-55.6%
Purse-Snatching	137	215	56.9%	\$23,367	\$42,664	82.6%
Shoplifting	3,551	3,328	-6.3%	\$411,552	\$424,275	3.1%
From Motor Vehicles	4,656	4,539	-2.5%	\$1,803,751	\$1,364,515	-24.4%
M/V Parts & Accessories	1,145	992	-13.4%	\$401,715	\$418,032	4.1%
Bicycles	998	1,053	5.5%	\$215,564	\$220,173	2.1%
From Buildings	3,803	3,834	0.8%	\$2,533,639	\$2,476,869	-2.2%
From Coin-Op Machines	152	171	12.5%	\$75,535	\$46,477	-38.5%
All Other	9,539	9,903	3.8%	\$4,667,988	\$6,343,699	35.9%
<b>Totals</b>	<b>24,064</b>	<b>24,087</b>	<b>0.1%</b>	<b>\$10,156,168</b>	<b>\$11,346,938</b>	<b>11.7%</b>

***Larceny-Theft — Comparative Data 2003–2004***



***MOTOR VEHICLE THEFT***

Uniform Crime Reporting defines Motor Vehicle Theft as the larceny or attempted larceny of a motor vehicle, including “joy riding.” Excluded from this class is a reported offense where there is lawful access to the vehicle, such as a family situation, or unauthorized use by others with lawful access, such as with employees.

Motor vehicles are defined by UCR as self-propelled vehicles that run on the surface of the land and not on rails, such as automobiles, trucks, buses, motorcycles, motor scooters, snowmobiles, ATVs, etc. Not included are farm equipment, construction equipment, airplanes, motorboats.

*Unauthorized use of property — “1. A person is guilty of theft if: A. Knowing that he does not have the consent of the owner, he takes, operates or exercises control over a vehicle, or knowing that the vehicle has been wrongfully obtained, he rides in such vehicle.” M.R.S.A. Title 17-A § 360*



<b><i>Trend</i></b>						
<b>Year</b>	<b>2000</b>	<b>2001</b>	<b>2002</b>	<b>2003</b>	<b>2004</b>	<b>2000–2004</b>
Number reported	1,317	1,667	1,418	1,450	1,305	
% change from previous year	-9.6%	26.6%	-14.9%	2.3%	-10.0%	
						% change -0.9%
Rate per 1,000	1.03	1.30	1.10	1.11	0.99	
% change from previous year	-12.7%	26.2%	-15.7%	1.0%	-10.7%	
						% change -3.8%

**Type of Vehicle 2003–2004**

	Auto- mobiles	Trucks/ Buses	Other Vehicles	Totals
2003	963	199	288	<b>1,450</b>
2004	881	162	262	<b>1,305</b>
% change	-8.5%	-18.6%	-9.0%	<b>-10.0%</b>

**Locally Stolen M/Vs Recovered 2004**

	No. Recovered	% Recovered
Recovered Locally	573	43.9%
Recovered — Other Jurisdictions	257	19.7%
<b>Total Recovered</b>	<b>830</b>	<b>63.6%</b>
Not Recovered	475	36.4%

**Characteristics — 2004**

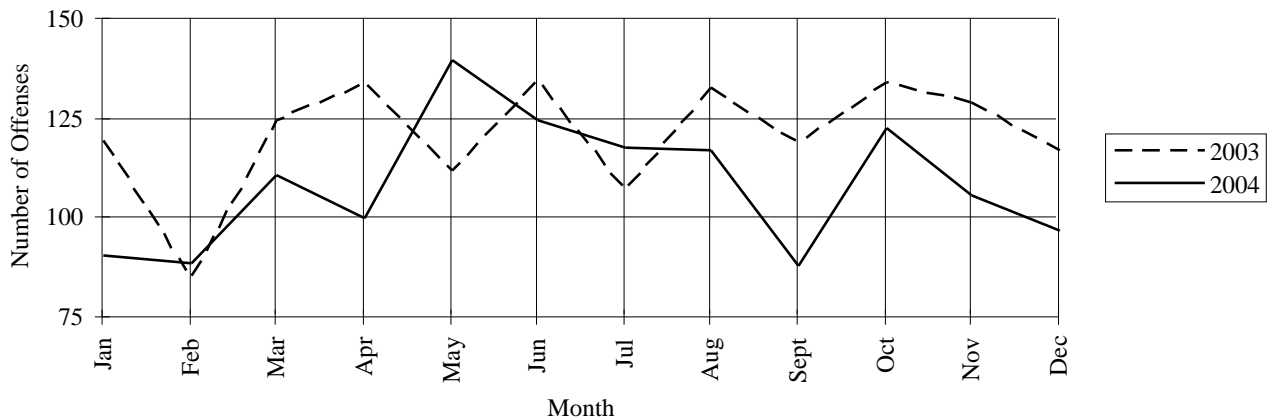
Type of Vehicle	
Automobiles.....	67.5%
Other Vehicles .....	20.1%
Trucks/Buses .....	12.4%
Months of Highest Occurrence	
May .....	10.7%
June .....	9.6%
October .....	9.4%

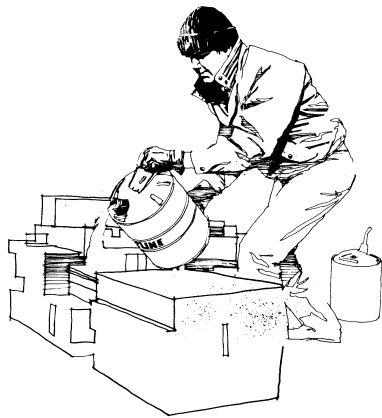
Value of Property Stolen during Offense	
Total.....	\$6,915,726.00
Per Incident Average.....	\$5,299.41
<b>Number of Locally Stolen M/Vs Recovered</b> .....	<b>830</b>
Value of Property Recovered	
Total .....	\$5,136,315.00
Clearance Rate	
471 Offenses Cleared.....	36.1%
Arrests/Crime Ratio.....	0.27

**Profile of Persons Arrested  
352 Arrests**

Age	
17 and under.....	41.5%
18–24.....	29.0%
25–29.....	9.7%
30–34.....	7.4%
35–39.....	5.7%
40 and over.....	6.8%
Sex	
Male.....	81.0%
Female.....	19.0%

**Stolen Vehicles — Comparative Data 2003–2004**



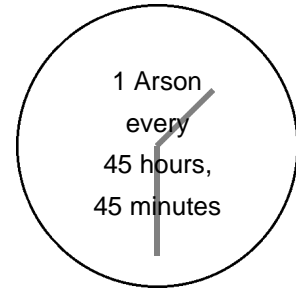


## ARSON

Arson is defined by the Uniform Crime Reporting program as any willful or malicious burning or attempt to burn, with or without intent to defraud, a dwelling house, public building, motor vehicle or aircraft, personal property of another, etc. Only fires determined through investigation to have been willfully or maliciously set are classified as arson. Fires of suspicious or unknown origins are excluded.

*"1. A person is guilty of arson if he starts, causes, or maintains a fire or explosion; A. On the property of another with the intent to damage or destroy property thereon; or B. On his own property or the property of another (1) with the intent to enable any person to collect insurance proceeds for the loss caused by the fire or explosion; or (2) which recklessly endangers any person or the property of another."* M.R.S.A. Title 17-A, § 802.

### Crime Clock



able any person to collect insurance proceeds for the loss caused by the fire or explosion; or (2) which recklessly endangers any person or the property of another." M.R.S.A. Title 17-A, § 802.

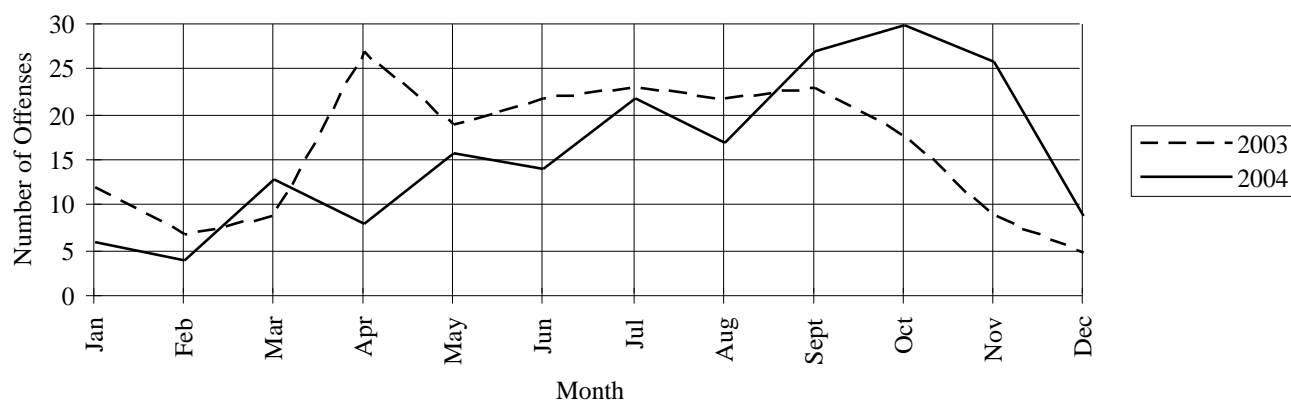
<b>Trend</b>						
<b>Year</b>	<b>2000</b>	<b>2001</b>	<b>2002</b>	<b>2003</b>	<b>2004</b>	<b>2000-2004</b>
Number reported	196	212	174	196	192	
% change from previous year	-1.0%	8.2%	-17.9%	12.6%	-2.0%	
						% change -2.0%
Rate per 1,000 population	0.15	0.16	0.13	0.15	0.15	
% change from previous year	-6.3%	6.7%	-18.8%	15.4%	—	
						% change —

<b>Characteristics — 2004</b>	
<b>Type of Property</b>	
Structural.....	51.0%
Mobile.....	16.7%
Other.....	32.3%
<b>Months of Highest Occurrence</b>	
October .....	15.6%
September .....	14.1%
November .....	13.5%
<b>Value of Property Damaged</b>	
Total.....	\$1,739,173.00
Per Incident Average.....	\$9,058.19
<b>Clearance Rate</b>	
50 Offenses Cleared.....	26.0%
Arrests/Crime Ratio.....	0.24

<b>Profile of Persons Arrested 47 Arrests</b>	
<b>Age</b>	
17 and under.....	61.7%
18-24.....	17.0%
25-29.....	6.4%
30-34.....	4.3%
35-39.....	2.1%
40 and over.....	8.5%
<b>Sex</b>	
Male.....	87.2%
Female.....	12.8%

<b>Arson by Property Type, 2003-2004</b>						
<b>Classification</b>	<b>Number of Offenses</b>			<b>Estimated Value of Property Loss</b>		
	<b>2003</b>	<b>2004</b>	<b>% change</b>	<b>2003</b>	<b>2004</b>	<b>% change</b>
Structural — Residential	52	62	19.2%	\$706,206	\$191,920	-72.8%
Structural — Non-residential	33	36	9.1%	\$71,875	\$832,542	1,058.3%
Mobile (cars, trailers, boats, etc.)	33	32	-3.0%	\$206,045	\$241,600	17.3%
All other (crops, fields, signs, etc.)	78	62	-20.5%	\$135,676	\$473,111	248.7%
<b>Totals</b>	<b>196</b>	<b>192</b>	<b>-2.0%</b>	<b>\$1,119,802</b>	<b>\$1,739,173</b>	<b>55.3%</b>

### *Arsons — Comparative Data 2003–2004*



### *Arson Breakdown by County*

County	Number of Offenses			Estimated Value of Property Loss		
	2003	2004	% change	2003	2004	% change
Androscoggin	17	4	-76.5%	\$94,521	\$5,075	-94.6%
Aroostook	3	2	-33.3%	\$110,000	\$1,000	-99.1%
Cumberland	60	41	-31.7%	\$138,802	\$220,781	59.1%
Franklin	3	1	-66.7%	\$3,800	—	-100.0%
Hancock	3	3	—	\$20,500	\$105	-99.5%
Kennebec	13	26	100.0%	\$23,875	\$222,995	834.0%
Knox	3	5	66.7%	\$220,000	\$306,725	39.4%
Lincoln	—	1	100.0%	—	\$1,000	100.0%
Oxford	3	5	66.7%	\$6,000	\$34,800	480.0%
Penobscot	30	53	76.7%	\$3,360	\$124,320	3600.0%
Piscataquis	1	3	200.0%	—	\$201,200	100.0%
Sagadahoc	3	6	100.0%	\$11,000	—	-100.0%
Somerset	3	11	266.7%	\$3,000	\$23,552	685.1%
Waldo	3	—	-100.0%	\$16,600	—	-100.0%
Washington	—	3	100.0%	—	\$65,100	100.0%
York	51	28	-45.1%	\$468,344	\$532,520	13.7%
<b>Totals</b>	<b>196</b>	<b>192</b>	<b>-2.0%</b>	<b>\$1,119,802</b>	<b>\$1,739,173</b>	<b>55.3%</b>

*Note: Arson figures shown by UCR may not agree with figures shown by the Fire Marshal's office due to local departments handling cases informally.*